

MASTER LAYOUT



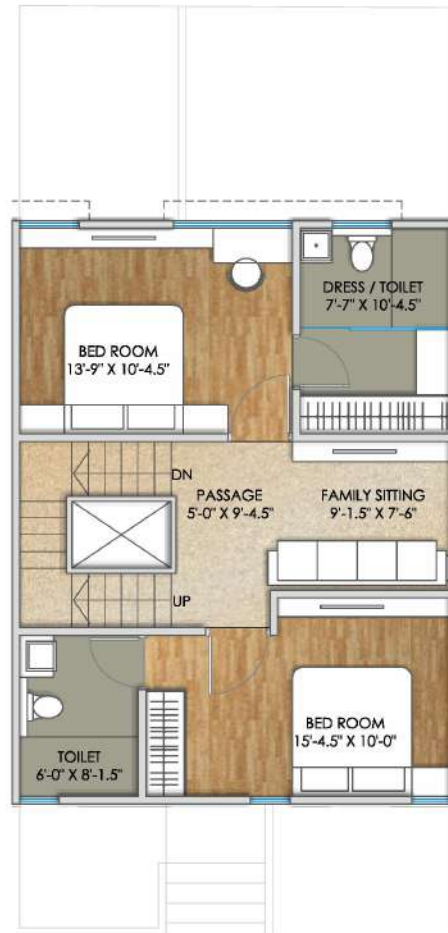
MASTER LAYOUT



GROUND FLOOR



FIRST FLOOR



SECOND FLOOR



TYPE-A (1 TO 7,9,10) 4 BHK VILLA

PLINTH AREA	= 521.00 SQ.FT.
GROUND FLOOR SLAB AREA	= 745.00 SQ.FT.
FIRST FLOOR SLAB AREA	= 722.00 SQ.FT.
SECOND FLOOR SLAB AREA	= 562.00 SQ.FT.

TOTAL AREA = 2550.00 SQ.FT.

GROUND FLOOR



FIRST FLOOR



SECOND FLOOR



TYPE-B(12B,14 TO 18) 4 BHK VILLA

PLINTH AREA	= 760.00 SQ.FT.
GROUND FLOOR SLAB AREA	= 978.00 SQ.FT.
FIRST FLOOR SLAB AREA	= 964.00 SQ.FT.
SECOND FLOOR SLAB AREA	= 750.00 SQ.FT.

TOTAL AREA = 3452.00 SQ.FT.

GROUND FLOOR



FIRST FLOOR



SECOND FLOOR



TYPE-C (19 TO 25) 4 BHK VILLA

PLINTH AREA	= 734.00 SQ.FT.
GROUND FLOOR SLAB AREA	= 957.00 SQ.FT.
FIRST FLOOR SLAB AREA	= 922.00 SQ.FT.
SECOND FLOOR SLAB AREA	= 722.00 SQ.FT.

TOTAL AREA = 3335.00 SQ.FT.

GROUND FLOOR



SECOND FLOOR



FIRST FLOOR



TYPE-D (26 TO 34) 5 BHK VILLA

PLINTH AREA	= 1034.00 SQ.FT.
GROUND FLOOR SLAB AREA	= 1363.00 SQ.FT.
FIRST FLOOR SLAB AREA	= 1353.00 SQ.FT.
SECOND FLOOR SLAB AREA	= 994.00 SQ.FT.

TOTAL AREA = 4744.00 SQ.FT.